


## Human FGF-10 Protein, His tag

Cat #: PRP1236

Size: 5 µg/20 µg/100 µg /1 mg

### Product Information

	<b>Product Name:</b> Human FGF-10 Protein, His tag		
<b>REF</b>	<b>Catalog Number:</b> PRP1236	<b>LOT</b>	<b>Lot Number:</b> Refer to product label
	<b>Purity:</b> > 98% as determined by SDS-PAGE		
	<b>Storage:</b> Store at -20°C		<b>Preparation method:</b> E.coli
	<b>Shipping:</b> The product is shipped at ambient temperature.		

**Background:** FGF-10 is a member of the large and diverse fibroblast growth factor (FGF) family of peptide growth factors. FGF-10 functions as a signaling molecule that is involved in many important processes. The proteins of this family play a core role in the prenatal development, postpartum growth, and regeneration processes of various tissues by promoting cell proliferation and differentiation. FGF-10 is most correlated with KGF/FGF-7 and is expressed during development, with a preference for expression in adult lungs. It binds to receptor FGFR2b and is essential as a signaling growth factor for mesenchymal-to-epithelial transition.

**Sequence:** Amino acid sequence derived from Human FGF-10 (Leu40-Ser208) (O15520) was expressed with a 6×His tag at the N-terminus.

**Protein length:** The recombinant Human FGF-10 consists of 169 amino acids and predicts a molecular mass of 19.3 kDa.

**Biological Activity:** Testing in Progress.

**Endotoxin:** <0.1 EU per µg of the protein by the LAL method.

**Formulation:** Lyophilized from 20 mM Tris-HCl, 500 mM NaCl, pH 8.0.

**Storage Instructions:** Lyophilized protein product should be stored desiccated below -20°C. Upon reconstitution, the protein should be stored at 4°C between 2-7 days and for future use below -20°C. For long term storage it is recommended to add a carrier protein (0.1% HSA or BSA). Please prevent freeze-thaw cycles.

**Usage notes:** Always centrifuge tubes before opening. It is recommended to reconstitute the lyophilized protein using the

buffer we provided not less than 100 µg/ml, which can then be further diluted to other aqueous solutions.

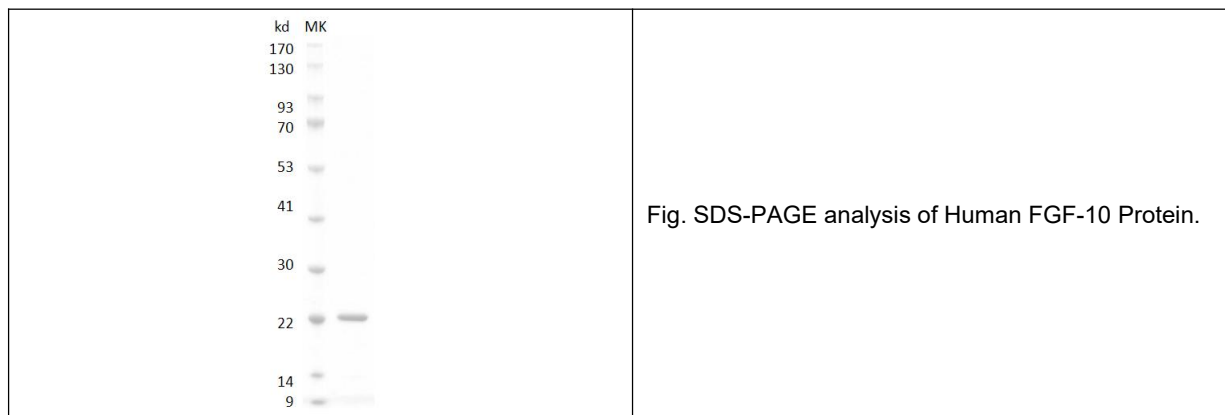


Fig. SDS-PAGE analysis of Human FGF-10 Protein.

**Note:** The product listed herein is for research use only and is not intended for use in human or clinical diagnosis. Suggested applications of our products are not recommendations to use our products in violation of any patent or as a license. We cannot be responsible for patent infringements or other violations that may occur with the use of this product.